



JAMES M PEASLEE

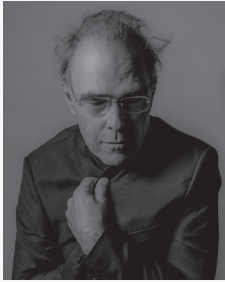


Photo Julie Clark

James M Peaslee (Jim) is a New York City Based Art Photographer

Born in 1952, Peaslee has been a photographer for 50 years. His formal photography education began with a course in the spring of 1970 in the Yale Art Department, given by the venerable Walker Evans. Aside from various workshops to ease the transition to the digital era, the next significant formal art education came near the end of the 50 years. He attended the Rocky Mountain School of Photography Summer Intensive program in 2018.

Peaslee grew up in Manhattan and its suburbs, Los Angeles, and France. He then went to three schools of higher learning (Yale, Harvard Law School, and NYU Law School), mostly in search of a way to earn a living. Ultimately, he did so (along with getting married and having two daughters) as a lawyer with an international law firm, Cleary Gottlieb. He retired from law at the beginning of 2018, to pursue photography and a bohemian lifestyle.

Cover: Pocket Square, Germany, 1970

The Photographs

Peaslee admits to having a **dark side**. Many of the pictures are stark or consciously simplified. A picture that is stark or simple offers the viewer a chance to ask what is missing, or what happens next. Many images show individuals who seem isolated. Pictures of buildings usually show no people, or only figures in silhouette or shadow.

One artist Peaslee cites as an influence is Edward Hopper. Walker Evans also helped set the tone. Although the great depression is long over, some of the themes of remoteness and desolation carry on (indeed particularly so in the spring of 2020).

Although prints are a better way to judge photographs, you can get a taste of Peaslee's work by looking at his website, jamesmpeaslee.com.

The photographs on the website are divided into eight collections. One photograph from each collection is shown on the following pages.

Collections

ALONE
BUILDINGS AND STRUCTURES
DESIGN
LIGHT
OBJECTS
PEOPLE
SURREAL
VIEWS

ALONE



Man and Bridge, Williamsburg, 2020

BUILDINGS AND STRUCTURES



Cabana Blue, Atlantic Beach, NY, 2015

DESIGN



Skids 2, Floyd Bennett Field, Brooklyn, 2018

LIGHT



Trolley, Germany, 1970

OBJECTS



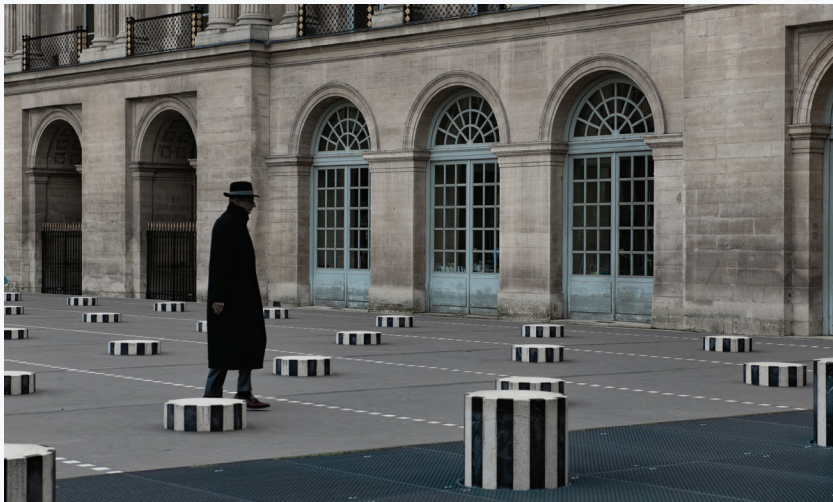
Chairs and Commemorative Roses, St John's Cathedral, New York City, 2019

PEOPLE



Man With Pocket Square, The Bronx, 2019

SURREAL



Stranger, Palais Royal, Paris, 2019

VIEW



Officers' Row, Fort Hancock, 2018



JAMES M PEASLEE photography

jamesmpeaslee.com

jamesmpeaslee@gmail.com | 917.626.6817 | IG: [@jamesmpeaslee](https://www.instagram.com/jamesmpeaslee)